

Looking sharp at your assets



A longer life

The MME Group stands for Quality



Cedric J.H. Talbot
Chairman of the Group

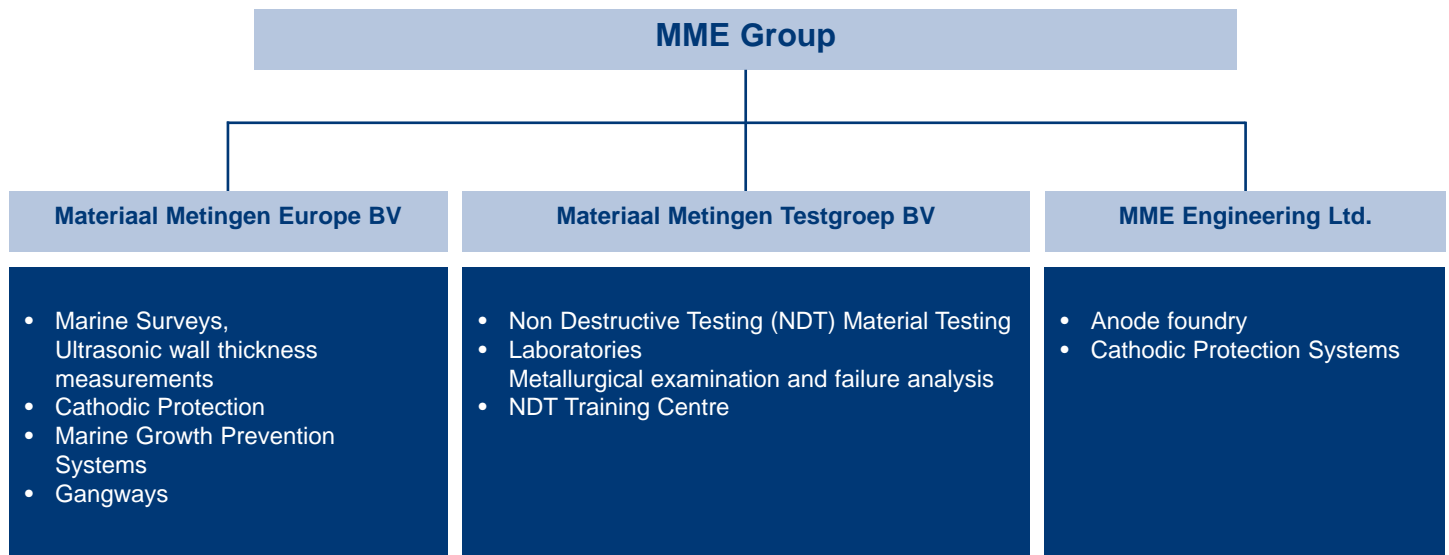
The MME Group consists of three specialised operating companies with their own divisional structure. Material testing, inspection and corrosion prevention are the main activities. After a successful start in the marine industry the company has steadily expanded, allowing an optimum in synergy between these activities. After 40 years the vast knowledge and skills applied daily are still steadily increasing. A well devised certification structure guarantees our customers an accurate and professional execution of their orders. *A Longer Life* - that is the mission put into practice with our dedicated staff.

MME: leading through more than 40 years of know-how and experience

The MME Group is fully committed to Quality; from Laboratory Testing of materials to Non-Destructive Testing of installations or the Inspection of Ships, our experienced specialists with their modern equipment guarantee the highest standards of reliability.

The Training Centre is not only concentrating on a continuous improvement of the expertise of our own inspectors, but is also active in the transfer of knowledge to personnel of customers, classification societies and research institutions. All our products and systems for corrosion prevention, antifouling and corrosion- monitoring comply with the highest standards of Industry, and contribute to a lifetime extension of your investments.

The group structure and specialties of MME



Non-Destructive Testing shows invisible defects



With Non-Destructive Testing we can determine the presence of invisible defects in materials, without any negative influence. The defects can then be judged to the applicable quality standard. The Materiaal Metingen Testgroep specialises in this and carries out your material inspections according to all internationally applied rules, codes and standards at home and abroad. We can also advise on NDT to your individual requirements.



Methods of Testing and Inspection:

- *Ultrasonic testing*
- *Radiography inspection*
- *Magnetic particle inspection*
- *Dye penetrant inspection*
- *Eddy current testing*
- *Visual inspection*
- *Hardness testing*
- *Crack detection*

Laboratories for in depth analysis

Materiaal Metingen Testgroep offers you a modern and well equipped laboratory for non-destructive and destructive testing of metals and synthetic materials with a dedicated workshop for the preparation of test bars.

A team of professional colleagues with a vast experience and the latest equipment at their disposal offers you under one roof, a high quality service that is fast, cost-effective and reliable.

The laboratory is qualified for the re-stamping of materials and the independent execution of welding methods-and welders qualifications.

All these activities are carried out both in house and on site.



The MME Laboratory offers the following disciplines:

- *Mechanical tests*
- *Chemical analysis*
- *Metallurgical examination*
- *Failure analysis*
- *Corrosion inspection*



Leading specialists in ultrasonic thickness measurements

A reliable condition assessment of a ship is not only important to the owner, but more and more a commitment to our modern society.

With an ever increasing demand for quality and safety in the Marine Industry, MME has succeeded over the years in staying at the forefront of the market, combining knowledge and experience, thus guaranteeing the best service available. A rapid anticipation on developments in rules prevents unnecessary waste of time and increases profitability.

MME provides owners and managers worldwide with accurate and relevant information, allowing them to manage their vessels effectively.



MME is market leader for the following surveys:

- Ultrasonic wall thickness measurements
- Corrosion inspections
- Steel calculations
- Close-up surveys
- Condition assessment programmes (CAP)
- Rope access

Approved by I.A.C.S. members

Cathodic protection with sacrificial anodes

From ships to harbour installations, from dry-docks to lockgates, corrosion is one of the major threats to your investment. Cathodic protection is one of the most effective measures against it. MME has an extensive experience in the design, manufacture and supply of sacrificial anodes for cathodic protection systems. Our foundry casts special anodes for a great diversity of applications. We do this fast and cost-effectively. Furthermore a vast range of standard anodes is readily available from a number of stock locations that are strategically situated.

MME has taken a prime position in this market with high quality products at competitive prices.



Anodes for:

- Shipping
- Harbour installations
- Offshore industry
- Storage tanks

Cathodic protection with impressed current (ICCP)

The prevention and monitoring of corrosion on ships and marine structures are part of the core competence of the MME Group. For this we offer intelligent solutions and supply fully digital impressed current systems (ICCP).

The effectiveness of the designs and reliability of the MME equipment has been proven over the years on various types of ships: from patrol vessel to VLCC. Besides configurations using standard components, MME also supplies dedicated systems for the protection of dredgers, offshore installations and harbours. Operators of MME systems have the option to monitor the condition and protection levels of their ships on Internet (MME Xchange™).



Advantages of MME ICCP systems:

- *A longer life*
- *Condition related protection*
- *Proven technology*
- *Improved hydrodynamic properties*
- *Active condition monitoring*
- *Extended docking intervals*
- *MME Xchange™*

Marine growth prevention for cooling water systems

Marine growth in sea chests, piping and heat exchangers is a threat for the performance and condition of your ship.

To minimise this risk the MME Marine Growth Prevention System (MGPS) has been developed.

This solution not only prevents marine fouling, but also suppresses corrosion in cooling water systems.

The MME M.A.G.I.C. (Marine Anti Growth and Impressed Current) combines the MGPS and ICCP power supply in one compact unit



Advantages of the MME System:

- *Automatic control*
- *Communication with vessel management systems*
- *Clean (Box) coolers*
- *Plug-and-Protect®*
- *MME Xchange™*

Harbinger gangways and ladders

MME supplies a great variety in types of gangways and accommodation ladders for ships and offshore installations, as well as tailor-made solutions according to specific needs of our clients.

The Harbinger gangways and ladders comply with all international demands, rules and regulations, as laid down in guidelines such as BSMA 78.

Most types are available from stock locations strategically located across Europe making same day delivery possible throughout the European continent.

Gangway and Ladder assortment:

- *Accommodation ladders*
- *Gangways*
- *Passenger gangways*
- *Painting rafts*
- *Bulwark ladders*
- *Tailor-made access systems*
- *Scaffolding*



Leading the way through dedicated courses

Quality requires qualified people. Therefore companies that look ahead invest in people by means of practical and applicable training. To serve this need MME has founded the NDT Training Centre in 1969, facilitating in a wide range of NDT courses. Since then our institute has grown to a well renowned training centre. Nowadays courses can be given to practically every standard, including American rules, EN 473 and ISO 9712. Next to dedicated courses for recognised certificates of all major inspection methods, tailor-made trainings can be given, either at MME or on location.

Furthermore MME is the examination institute for SKO, approved by the National Council for Accreditation (RvA).

The NDT Training Centre offers the following courses:

- *Ultrasonic inspection*
- *Radiography inspection*
- *Magnetic particle inspection*
- *Dye penetrant inspection*
- *Eddy current testing*
- *Radiography film interpretation*
- *Tailor-made trainings*



Active in a wide range of activities

Our products and services are used daily world wide. MME is a reliable partner for enterprises and organisations such as Shipping, Offshore, Petrochemical, Energy, Aviation and Civil Works.

We know the inherent demands of all these areas and respond with high quality cost-effective services and products that comply with all requirements of our clients.



With thanks to a.o. Victor Buyck Steel Construction N.V., Eeklo, Belgium; Huisman-Itrec and Hollandia B.V.

MME is stand-by with a world wide network



Your work is in good hands at MME, supported by an international network of agents and service engineers.

Certified quality

MME has the know-how to apply the best certified techniques for every project, resulting in a unique *partnership* combining professionalism, reliability and quality.



MME GROUP

MME Group
Rietdekkerstraat 16, 2984 BM Ridderkerk, The Netherlands
PO Box 4222, 2980 GE Ridderkerk, The Netherlands
T +31 (0) 180 482 828
F +31 (0) 180 462 240
E info@mme-group.com
I www.mme-group.com

Other locations:
The Netherlands
IJmuiden
Hengelo
Dintmond
Heerenveen
United Kingdom
Faversham